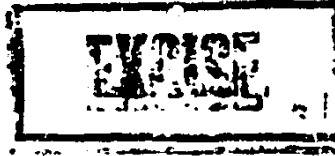


LEE ELMER E
79 STATE 298104

UNCLASSIFIED



1095

E66

UNCLASSIFIED

PAGE 21

STATE 298104

ORIGIN SCS-26

INFO OCT-21 ARA-15 ISO-40 CA-21 SSO-20 DODE-00 /023 R

DRAFTED BY CA/SCS:MCELLA

APPROVED BY ARA:RERUCE

CA/SCS:BGDAVIS

S/S-C:SRPVALERGA

-----066124 250601Z /20

O 250441Z NOV 79

FM SECSTATE WASHDC

TO AMEMBASSY GEORGETOWN IMMEDIATE

UNCLAS STATE 298104

E.C. 11652:N/A

SUBJECT: W/W PEOPLE'S TEMPLE MEMBERS

DEPT EAS RECEIVED INQUIRIES ON THE FOLLOWING PERSONS WHO MAY

HAVE BEEN AMONG THOSE PEOPLE'S TEMPLE MEMBERS IN GUYANA.



DEPARTMENT OF STATE A/CDC, MR	DATE 3/2/81
REVIEWED BY <i>[Signature]</i>	
PORTIONS DENIED AS INDICATED	

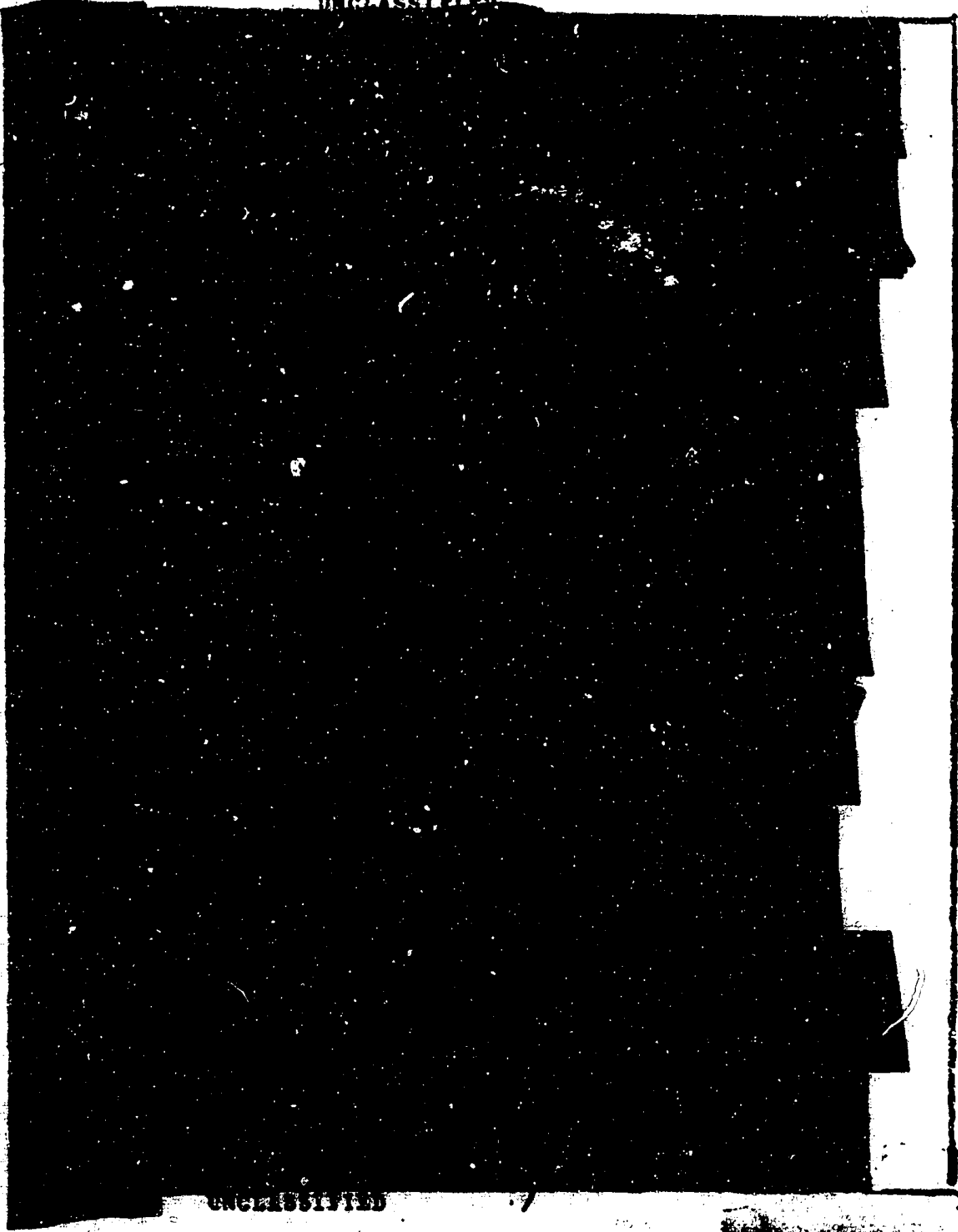
E66

UNCLASSIFIED

LEE ELMER E
78 STATE 296184

UNCLASSIFIED

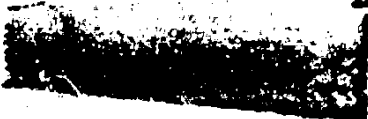
E66



UNCLASSIFIED

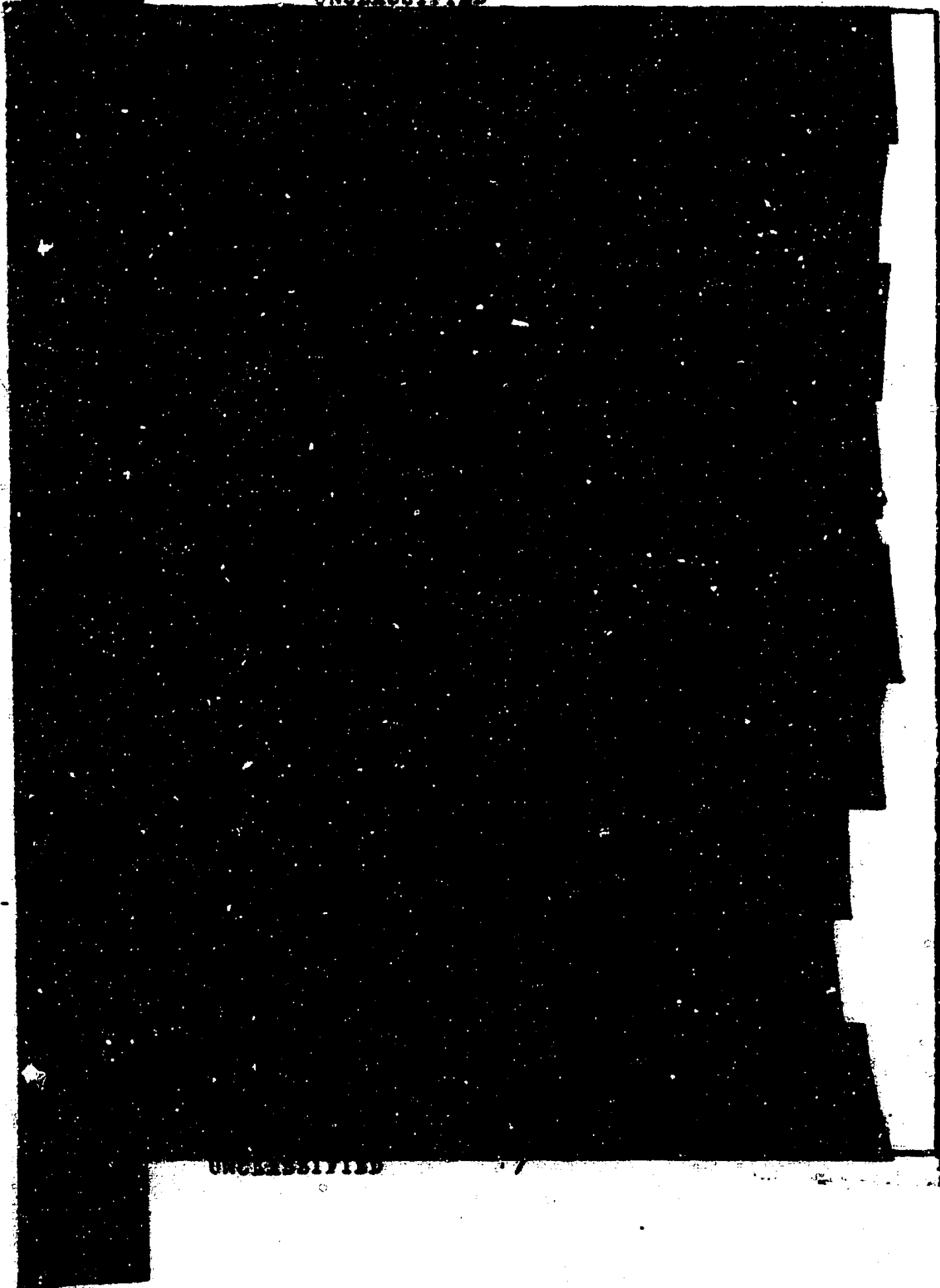
PAGE

2



LEE ELMER I
72 STATE 298104

UNCLASSIFIED



E b 6

UNCLASSIFIED

PAGE

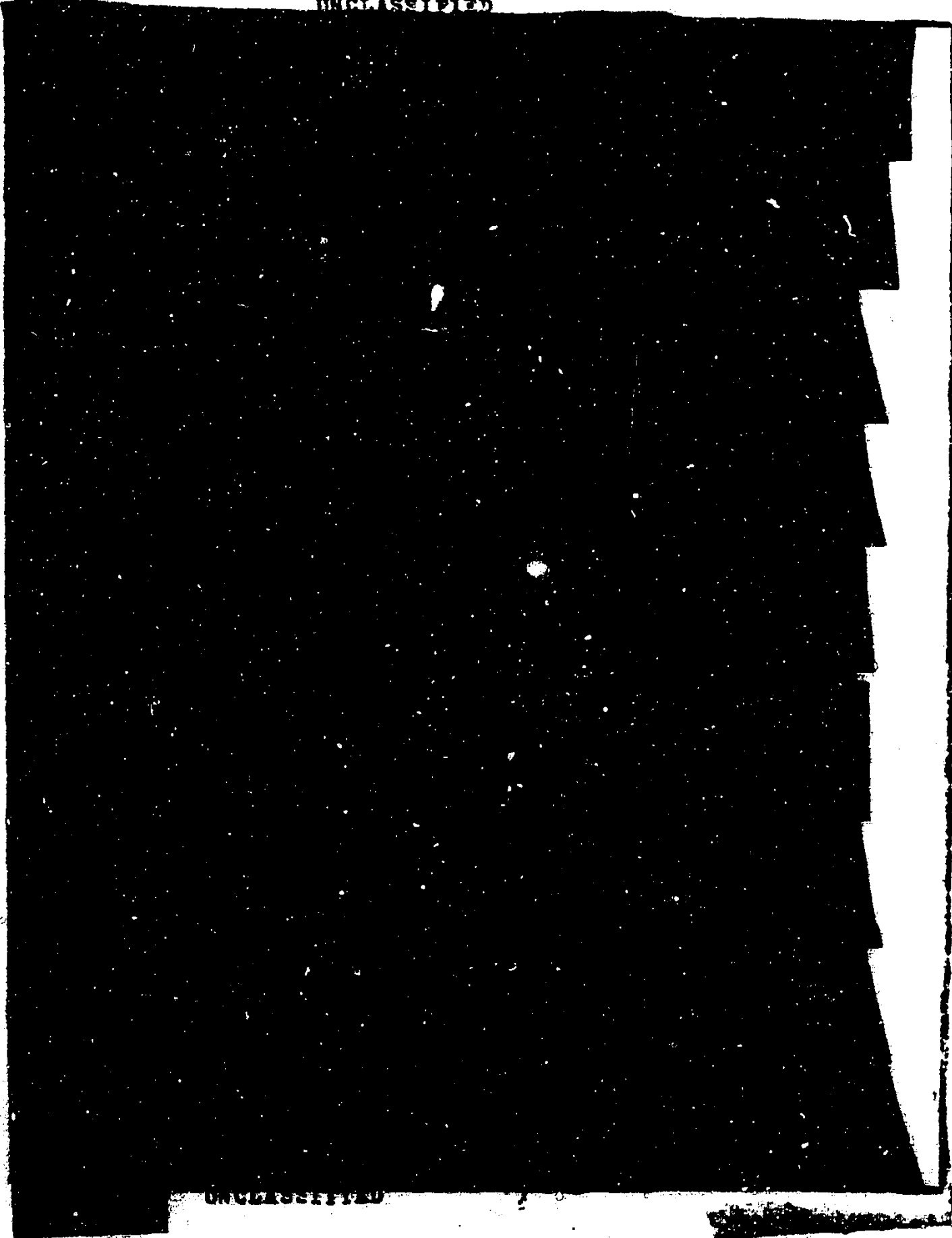
3

1100001

LEE ELMER E
79 STATE 299104

UNCLASSIFIED

E66

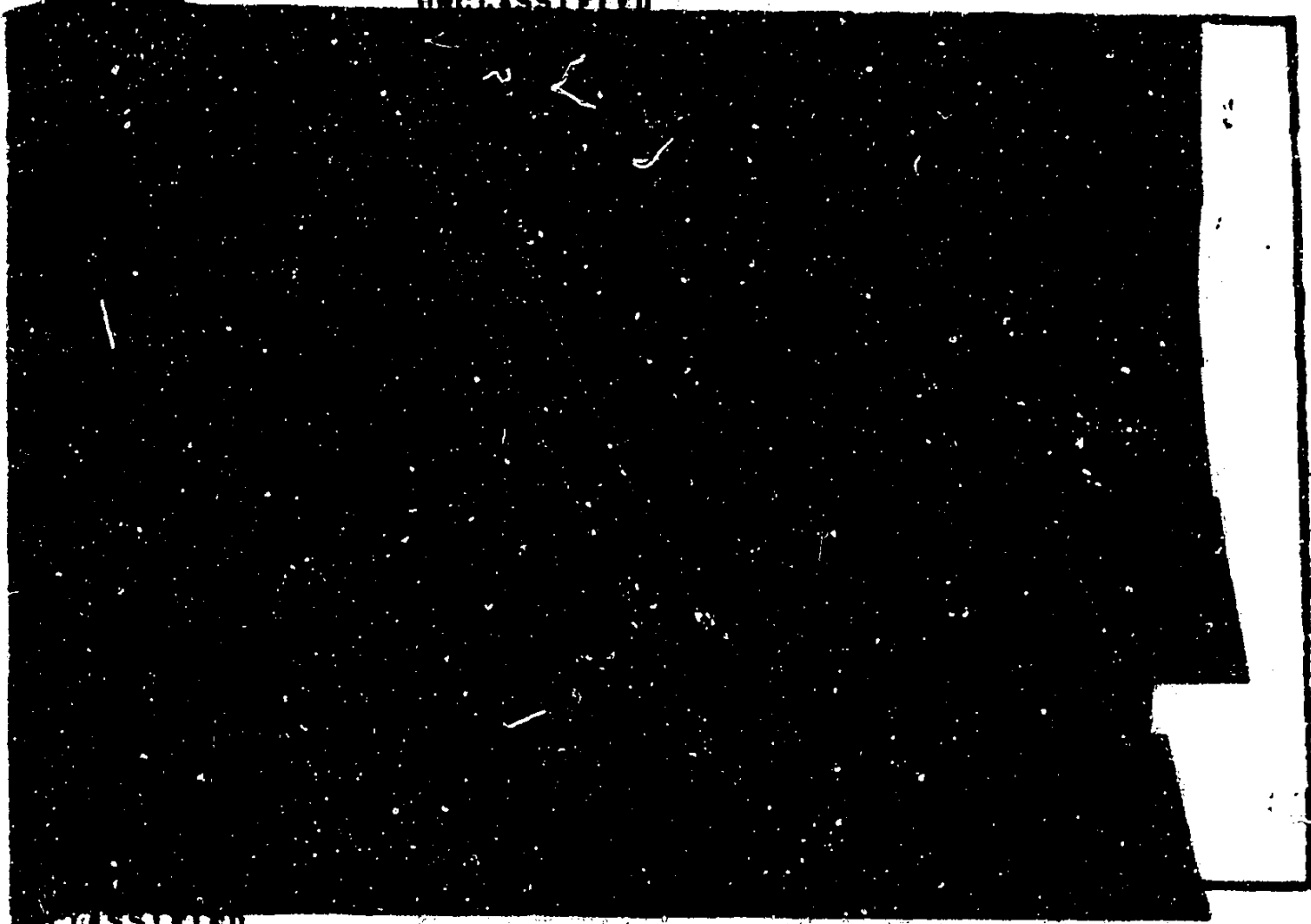


UNCLASSIFIED

LEE ELMER E
70 STATE 298104

UNCLASSIFIED

E b6



UNCLASSIFIED